



## Sunrise Engineering

### Specializein

SPM, Automation, Conveyor, Dies,  
Jigs Rubber & Plastic Part

### Works Office

Near Govt. Degree College  
Kharkhara



# Guiding Principles



## VALUES

- Sunrise Shall Keep Transparency to All Stake Holders
- Will be a Customer Centric Organization.
- The scaling up of businesses shall be based on Built in Quality, innovations and sustainability.
- Sunrise shall aspire to win trust of all stakeholders.

## VISION

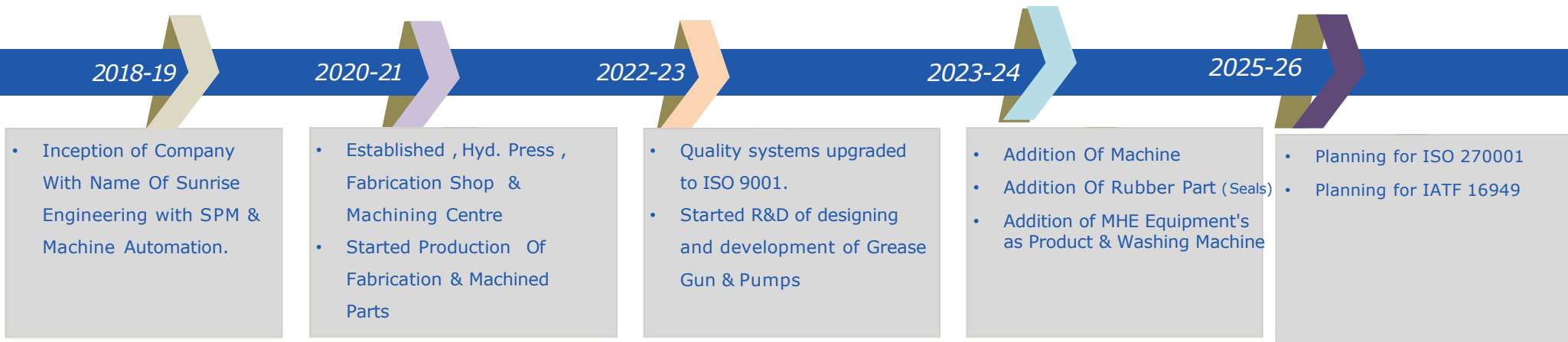
- To establish Group as a Gold Standard in Product Innovation, superior quality, best value proposition, superb service and enhanced customer satisfaction.
- To be amongst top 10 Proprietary Part companies and become most preferred supplier in India.
- Build businesses & organisations, with an intention to create global footprint.

## MISSION

- To develop technology in terms of products, processes and systems at par with global best in next 5 years and continually innovate.
- To establish presence in all market segments In India in next 3 years and globally in 7 years.

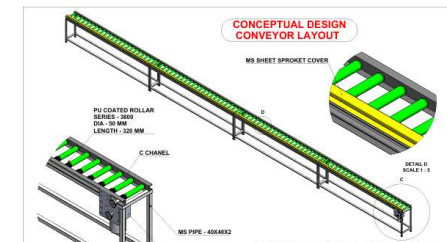
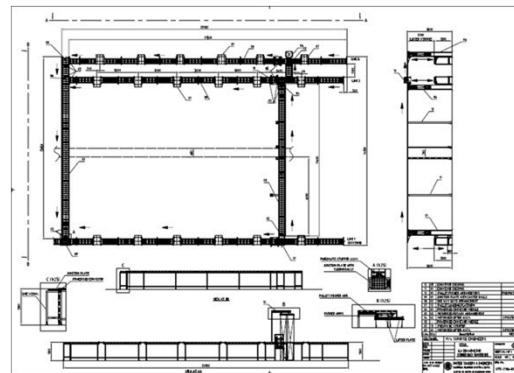
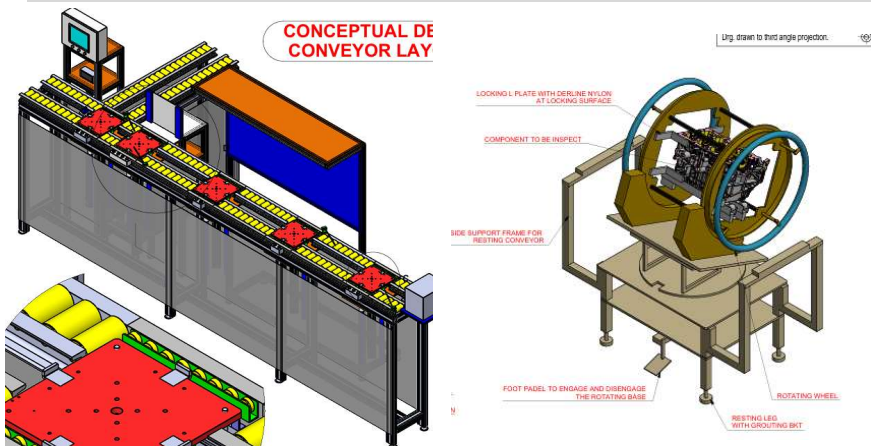
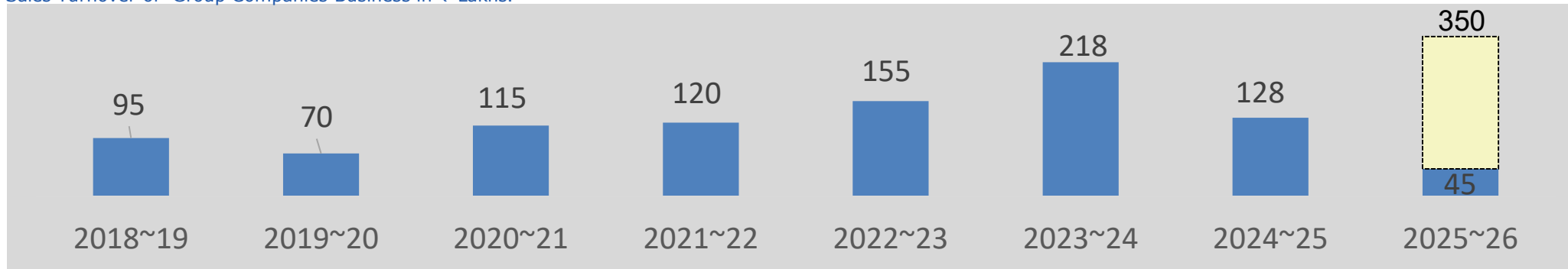


# Journey At A Glance



## Performance over the years

Sales Turnover of Group Companies Business in ₹ Lakhs.



# Product details of group companies

## **Machine Part:-**

- ☐ Conveyors & Automations
- ☐ Inspection Machines, Pressing Machines
- ☐ Die , Jigs & Fixtures, Air Gauges
- ☐ Washing Machines, & All Type Of SPM Machine

## **Production Part:-**

- ☐ High Precision Machined Parts
- ☐ Cold Forging Parts
- ☐ Rubber & Plastic Parts

## **Project:-**

- ☐ Complete Greenfield Project for M/s Som Autotech ( Initial Conception to Mass Production)
- ☐ In-house design Facility 3D Solid Works with One Number Work Station



# Facilities :- Sunrise Engineering



**MILLING MACHINE**



**WIRE CUT MACHINE**



**Welding MACHINE**

# Facilities :- Sunrise Engineering





# Facilities :- Group Companies

1. Traub
2. Hydraulic Press
3. CNC Lathe Machine
4. VMC Machine
5. Drill Machine
6. CMM Machine



- State of art in house facility Manufacturing Of Cold Forge , Machined & Fabricated Product
- The facility includes all latest machines
- Due to in house availability all of facilities the development of new components is very fast.
- Rubber , Plastic Parts & Machine Automation through Group Companies.

# Facilities :- Sunrise Engineering

1. CMM
2. Digital Height Gauge
3. Surface Roughness Tester
4. Micrometer
5. Vernier
6. Hardness Tester
7. Attribute Gauges



- All Required Measuring Instrument is available with us



# Products



## QA Machine for Toyota Crank Case

### Checking Parameter

Profile  
Position  
Through Hole  
& Nut Tightening



## QA Machine for Toyota Cylinder Block

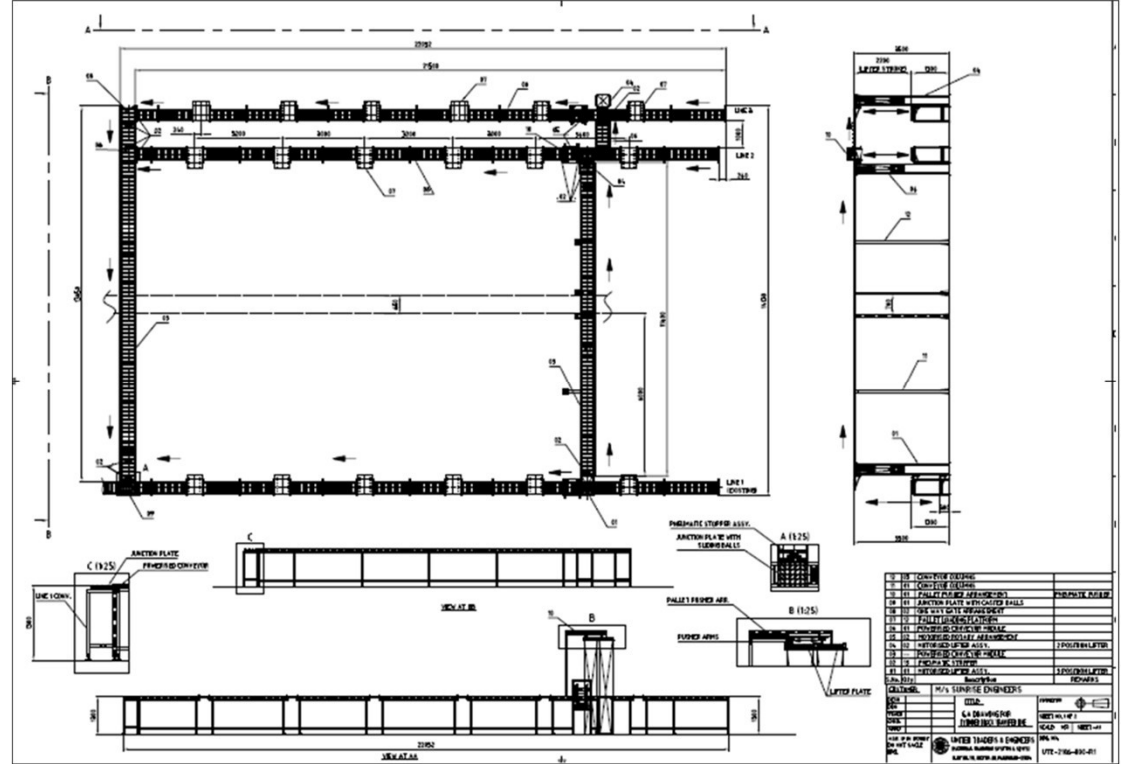
### Checking Parameter

Through Hole  
Hole position  
Hole Go/No go  
Oil hole gallery

# Products



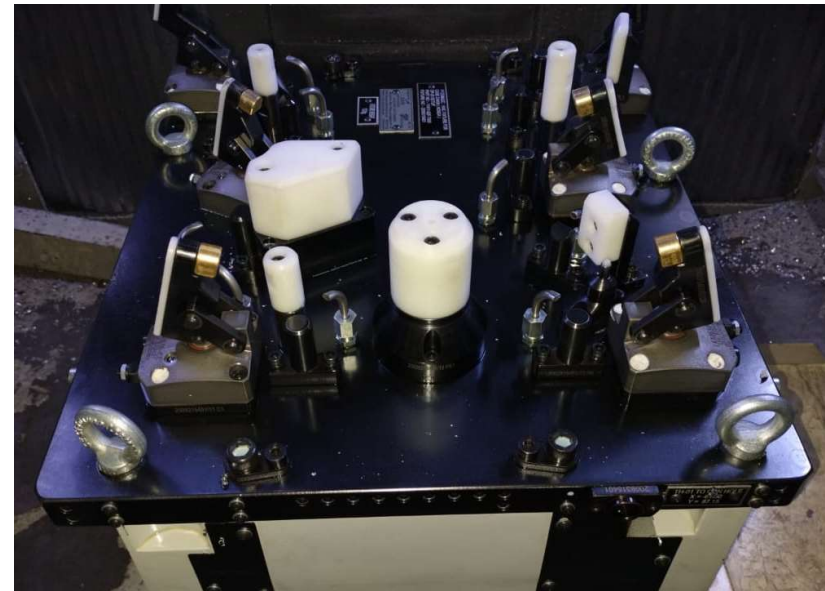
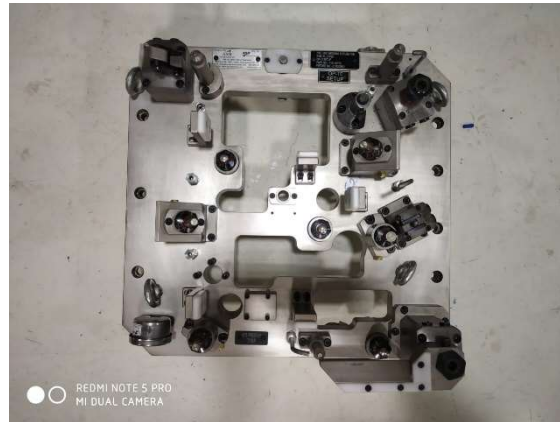
**Hydraulic Press SPM**



**Conveyor System**



## Fixture & Gauges...





# Channel Partners & Out Source Facilities

## Channel Partners

- ☐ M/S Lucent Engineering

## Out Source Facilities

- ☐ Grinding
- ☐ EDM
- ☐ Material Testing & Calibration ( NABL Approved)
- ☐ Inspection (Contour)

Customers



Proposal  
Under  
Discussion



---

# ***THANKS***

## ***LOOKING FORWARD FOR A GREAT RELATIONSHIP***

**Contact Person : A.K Sharma**

**Handy +91-9599404776**

**Kharkhara Dharuhera-121306**

